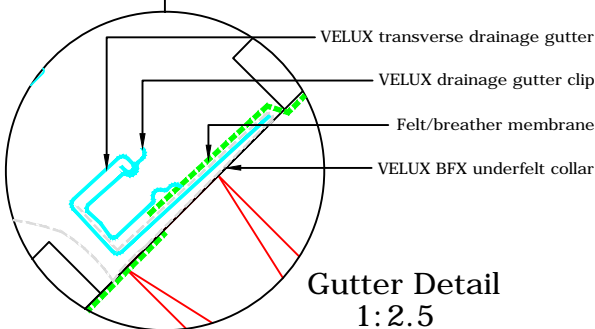
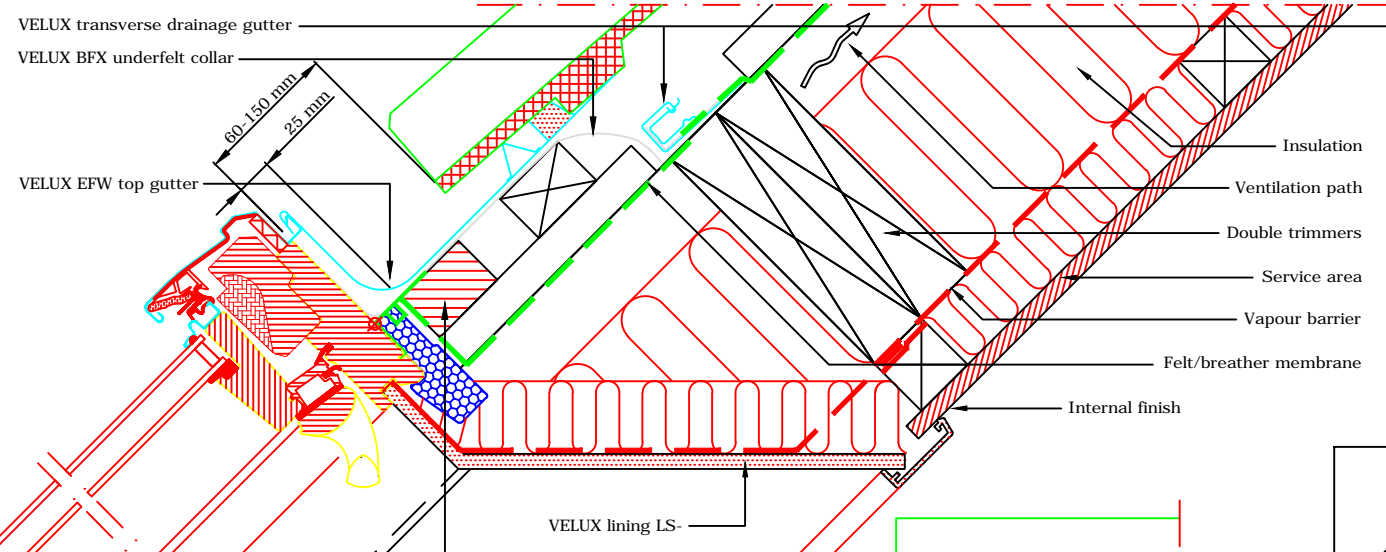
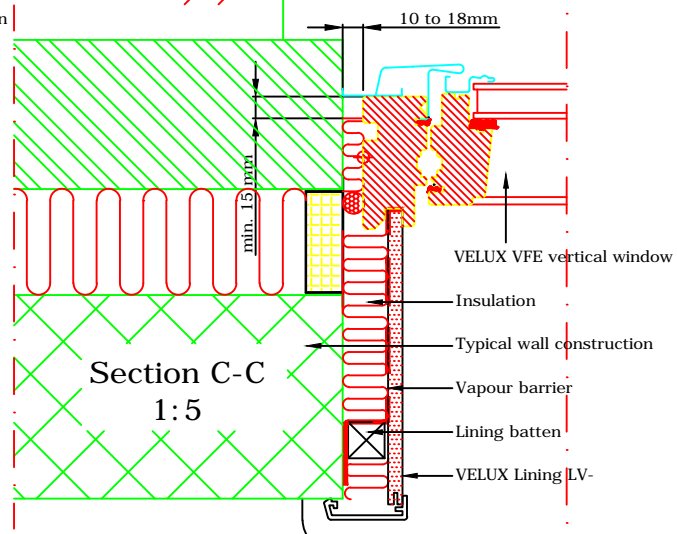


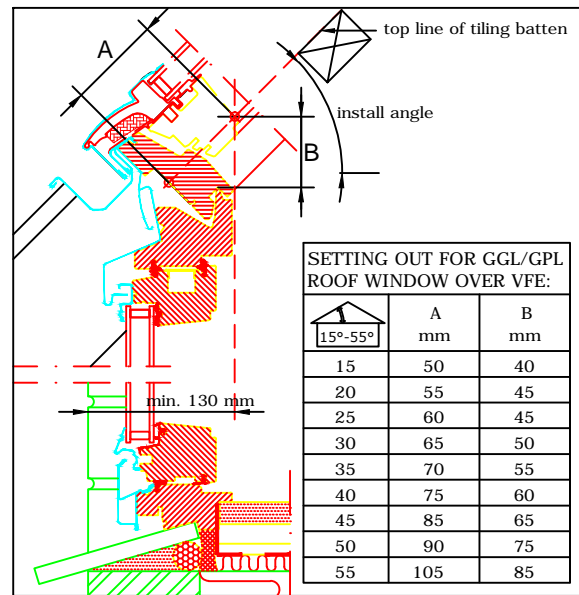
TYPICAL ELEVATION



Gutter Detail
1:2.5



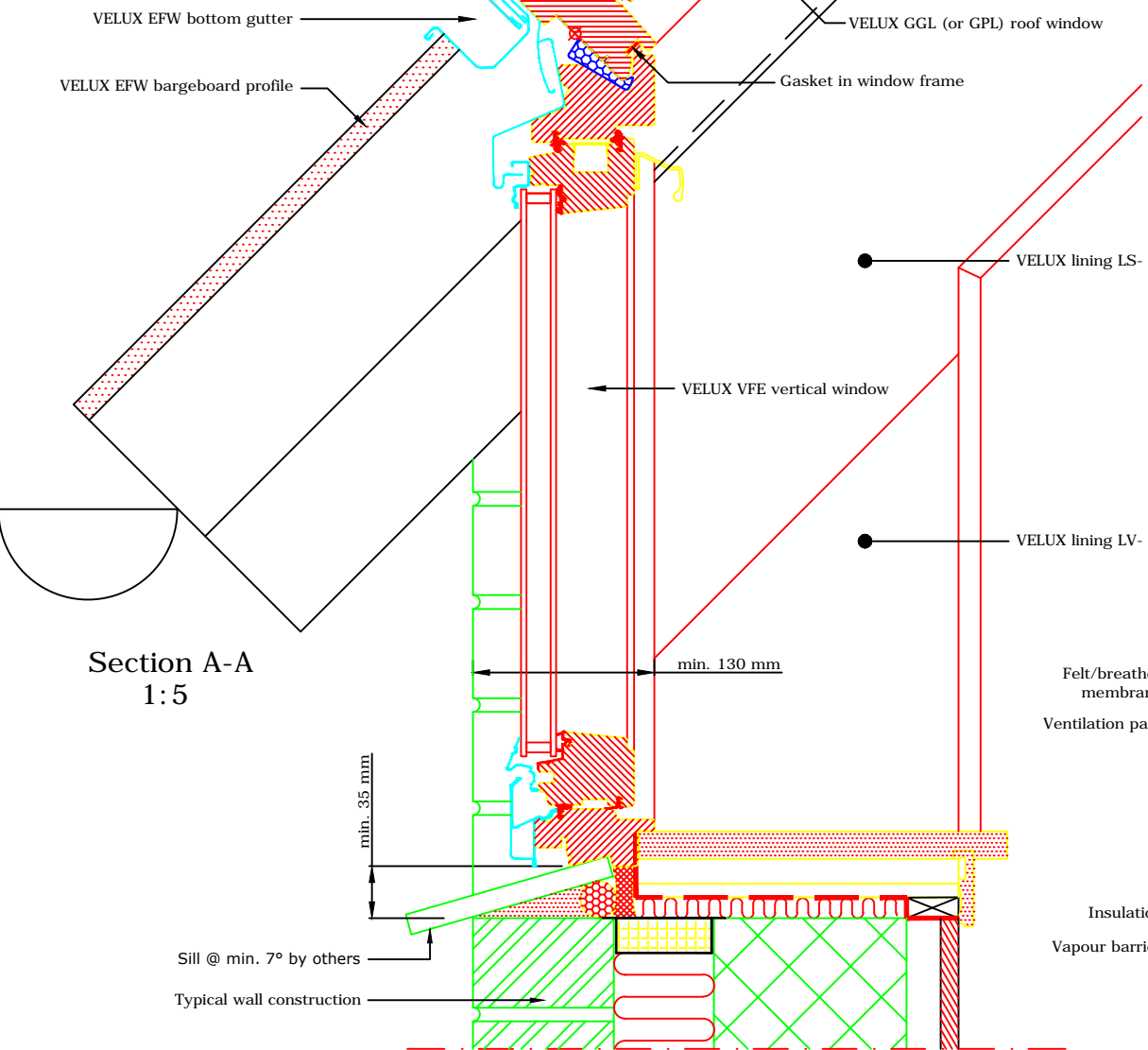
Section C-C
1:5



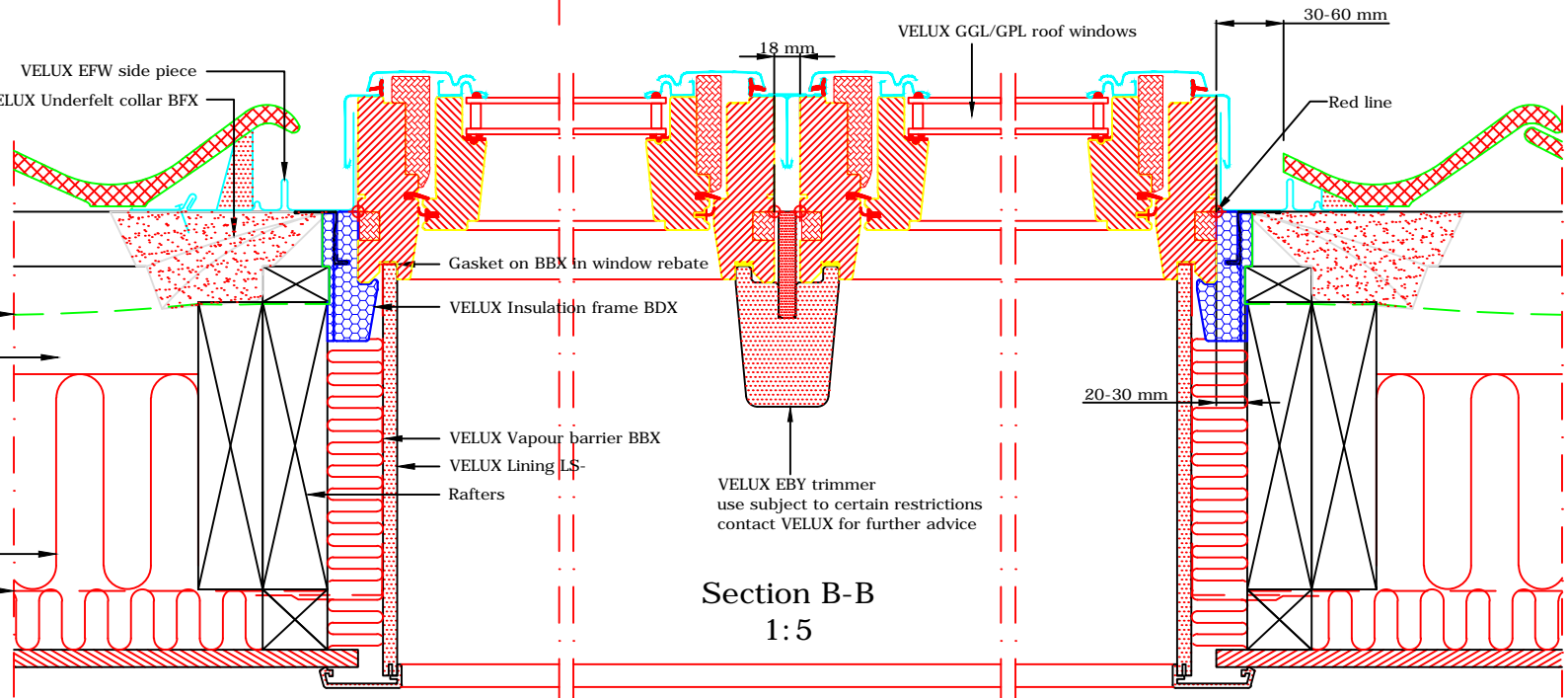
SETTING OUT FOR GGL/GPL ROOF WINDOW OVER VFE:

15°-55°	A mm	B mm
15	50	40
20	55	45
25	60	45
30	65	50
35	70	55
40	75	60
45	85	65
50	90	75
55	105	85

- VELUX Products:
- GGL 15°-90°
 - OR
 - GPL 15°-55° * 55°-75° with special springs
 - VFE 90°
 - EFW 15°-55°
 - EBY W10
 - BFX
 - BDX
 - BBX
 - LS-
 - LV-
- Roof covering:
- TILES < 120 mm



Section A-A
1:5



Section B-B
1:5

VELUX
 VELUX Company Ltd
 Woodside Way
 Glenrothes, Fife KY7 4ND
 tel: +44 (0) 1592 778 225

VELUX vertical window
VFE combi installation into profiled tile
 EFW flashing kit - standard install - 18mm frame gap
 All dimensions are in millimetres where shown

NOTE! When installing VELUX roof windows, flashings and accessories, please ensure compliance with building regulations and British/European standards where necessary. This detail represents the principles of a typical installation only and the design and specification of the final detail is the responsibility of others.

Latest revision:
 Note re: restrictions on use of EBY trimmer added

Date: **June 2014**
 Rev no: A
 Rev date: Nov 2014
 Drawn: **PJH**

File name:
VFE-EFW-0114-1081
 Scale: **1:5 approx. @ A3**