

Opening the window

The handle of the upper section is turned to a vertical position and the sash opens as a top-hung window. The sash should be able to remain open in any position. If not, see page 3.

The handle of the lower element is turned up to a horizontal position, enabling the element to be opened.

The upper element can also be opened as a centre-pivot window by using the control bar at the top.



Closing the window

Close the lower element before the upper element.



Use of the ventilation flap

To enjoy fresh air even when the window is fully closed, pull the control bar lightly downwards to open the ventilation flap. The window will remain locked, but air can enter the room through a built-in air filter that keeps out dust, insects and driving snow.



Cleaning the pane

Turn the handle to vertical position. Pull the control bar downwards and rotate the sash 180 degrees. The sash must be secured in position by sliding the two barrel bolts into the bushings at the bottom of the side frames. This safety feature leaves both hands free for cleaning.

Clean the pane with a soft, clean, lint-free cloth/chamois leather/non-abrasive sponge or a clean, non-metal window squeegee. Clean water will normally be sufficient for cleaning the pane. Ordinary, non-abrasive household cleaners can also be used. Soft water is best for cleaning panes. Therefore, in hard-water areas add a small amount of detergent to soften the water or wipe off all excess water after cleaning.

Warning

- Avoid contact from silicone with the pane.
- Do not use any cleaning products containing abrasive particles.
- Do not use chemical products for cleaning the pane.
- Avoid contact with the pane from all sharp or abrasive objects including jewellery.
- Never attempt to clean off dirt on the pane without first applying water.
- If any works are taking place in the vicinity of the pane, protect the pane with a clean plastic sheet to prevent any splashes or staining from aggressive and abrasive compounds.



Minimising condensation

Particularly in rooms with high levels of humidity, condensation can form on the inner pane of the window. This can be minimised by fitting a radiator directly below the window and by airing the room frequently.



Cleaning the air filter

The air filter can be removed and washed with ordinary household cleaners. Fully rotate and secure the window in cleaning position, then remove the filter from the filter rail. (New filters are available from your VELUX sales company).



Maintenance of timber

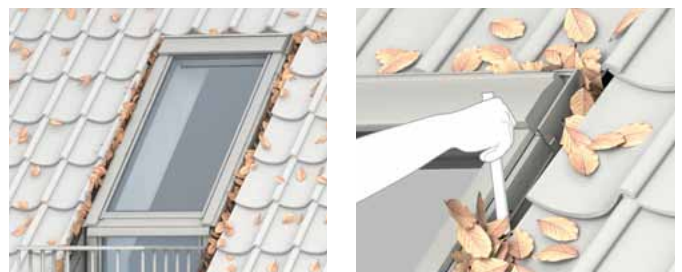
The timber has received basic treatment and a finished coating at the factory and can be cleaned with ordinary household cleaners. It must receive further treatment at least every four years and whenever required. Windows exposed to strong heat, strong sunlight and/or high levels of humidity (eg in kitchens or bathrooms) must however receive treatment at least every two years.

Surface maintenance: Remove surface treatment (lacquer or paint). Ensure surface is clean and dry and apply primer to the timber. When dry, apply a coat of waterbased acrylic lacquer/paint (always follow the manufacturer's directions). Apply the same method to the affected areas if the lacquer/paint is damaged.



Cleaning the flashing

Leaves and other debris should be removed from the flashing around the window to allow rainwater to flow freely.



Snow and ice

It is important to make sure that water can always drain off from the window and surrounding gutters.

Snow and ice should therefore be removed from the area on and around the window in the same way as leaves and other debris should be removed from flashing and gutters to allow melt water to flow freely.



Opening and closing window

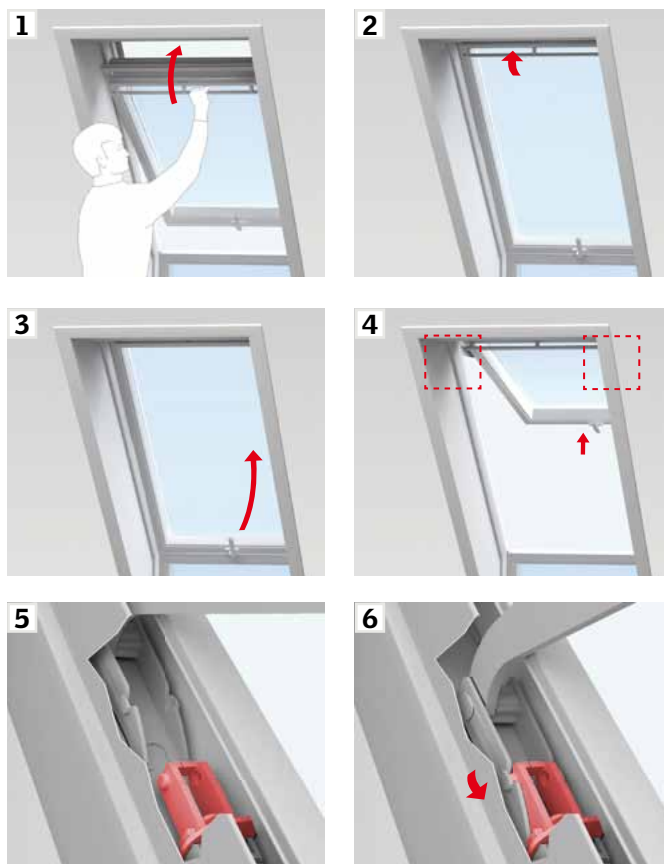
Open window by turning handle to vertical position. The sash should be able to remain open in any position. If not, check that fittings and springs connect on both sides (see section **A**). If the sash still cannot remain open in any position, adjust springs (see section **B**).



A

Connecting springs to fittings

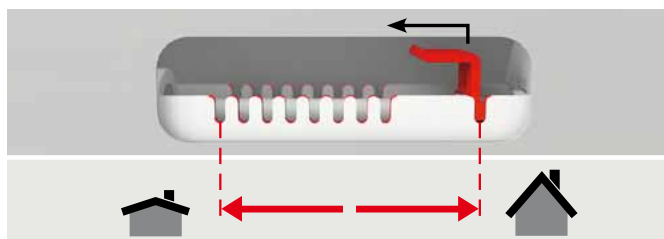
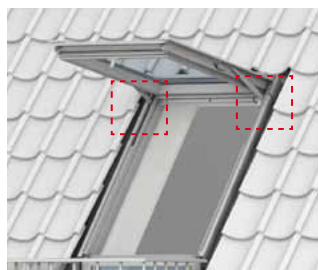
Close window using control bar (1, 2). Then open window using handle in bottom sash (3). Push sash outwards, ensuring that fittings and springs on both sides automatically connect (4, 5, 6).



B

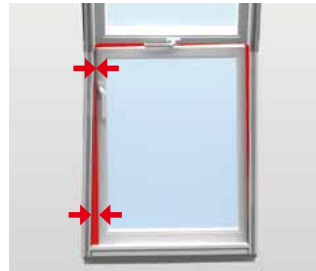
Adjusting springs

If the sash opens too quickly when opening or if it is too heavy to open, adjust the springs as shown. The adjustment depends on the roof pitch.



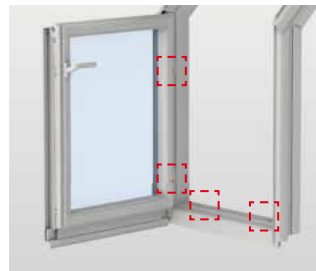
Adjustment of vertical elements

If bottom sashes bind because the roof construction has settled, the frames can be adjusted. Adjusting screws are positioned in the frame.



Opening elements

Open the sash.



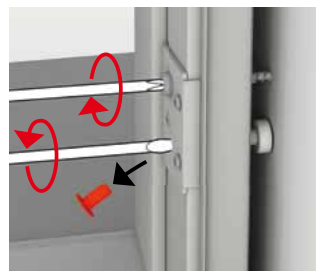
Fixed elements

Remove the sash: Remove the covers, unscrew angle bracket screws and remove the sash.



Adjustment of side frames

Remove cover cap from adjusting screw. Loosen adjusting screw. Adjust the frame by tightening the frame screw above the adjusting screw.



Adjustment of bottom frame

Remove cover caps, and adjust screws as shown.

