

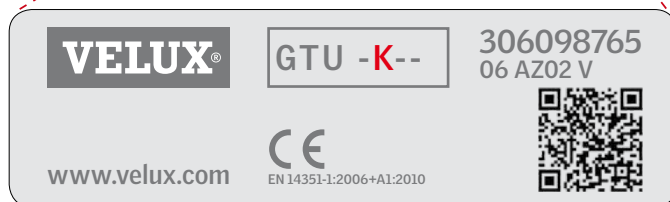
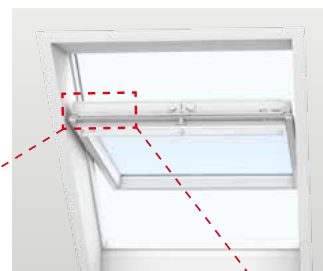
GTU

ENGLISH: Directions for use



Important!

These directions for use apply only to roof windows with a "K" in the size code on the data plate.



Opening and closing the window

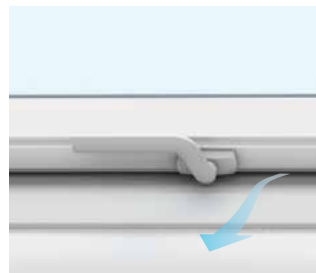
Open window by turning handle to vertical position. The sash should be able to remain open in any position. If not, see page 4.

Open window to emergency position by pushing the window sash all the way up. Close emergency escape/access by pulling sash downwards using the handles. Emergency escape/access facility should be tested once or twice a year, or as directed by Local Authority or emergency services. If the window sash does not remain open in emergency position, contact your VELUX sales company.



Ventilation position

The handle allows the sash to be secured in a ventilation position.



Use of the ventilation flap

To enjoy fresh air even when the window is fully closed, pull the control bar lightly downwards to open the ventilation flap. The window will remain locked, but air can enter the room through a built-in air filter that keeps out dust, insects and driving snow.



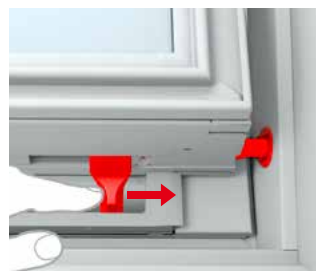
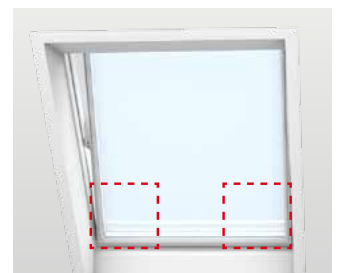
Cleaning the pane

Turn the handle to vertical position. Pull the control bar downwards and rotate the sash 180 degrees. The sash must be secured in position by sliding the two barrel bolts into the bushings at the bottom of the side frames. This safety feature leaves both hands free for cleaning.

Clean the pane with a soft, clean, lint-free cloth/chamois leather/non-abrasive sponge or a clean, non-metal window squeegee. Clean water will normally be sufficient for cleaning the pane. Ordinary, non-abrasive household cleaners can also be used.

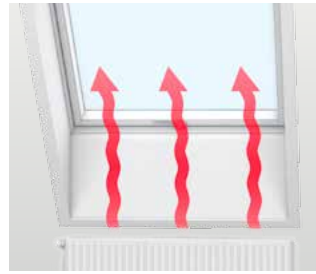
Warning

- Avoid contact from silicone with the pane.
- Do not use any cleaning products containing abrasive particles.
- Do not use household cleaners containing high levels of acid or alkaline for cleaning the pane.
- Avoid contact with the pane from all sharp or abrasive objects including jewellery.
- Never attempt to clean off dirt on the pane without first applying water.
- If any works are taking place in the vicinity of the pane, protect the pane with a clean plastic sheet to prevent any splashes or staining from aggressive and abrasive compounds.



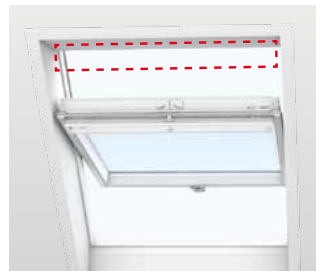
Minimising condensation

Particularly in rooms with high levels of humidity, condensation can form on the inner pane of the window. This can be minimised by fitting a radiator directly below the window and by airing the room frequently.



Cleaning the air filter

The air filter can be removed and washed with ordinary household cleaners. Fully rotate and secure the window in cleaning position, then remove the filter from the filter rail. (New filters are available from your VELUX sales company).



Cleaning the window

The white polyurethane surface can be cleaned with ordinary household cleaners.



Cleaning the flashing

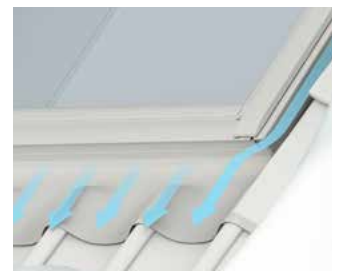
Leaves and other debris should be removed from the flashing around the window to allow rainwater to flow freely.



Snow and ice

It is important to make sure that water can always drain off from the window and surrounding gutters.

Snow and ice should therefore be removed from the area on and around the window in the same way as leaves and other debris should be removed from flashing and gutters to allow melt water to flow freely.



Opening and closing the window

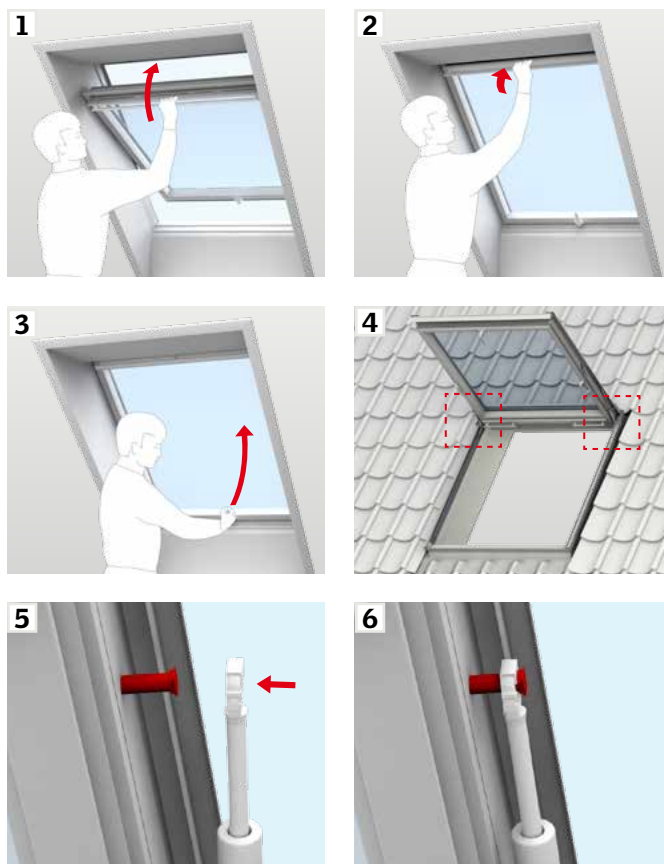
Open window by turning handle to vertical position. The sash should be able to remain open in any position. If not, check that fittings and springs connect on both sides (see section **A**). If the sash still cannot remain open in any position, adjust springs (see section **B**).



A

Connecting springs to fittings

Close window using control bar (1, 2). Then open window using handle in bottom sash (3). Push sash upwards until gas springs can be fitted in both sides (4). Push gas spring clip onto the locking pin (5). Make sure that the gas spring locking clip engages fully, with a click, onto the locking pin (6).



B

Adjusting springs

If the sash opens too quickly when opening or if it is too heavy to open, adjust the springs as shown. The adjustment depends on the roof pitch.

