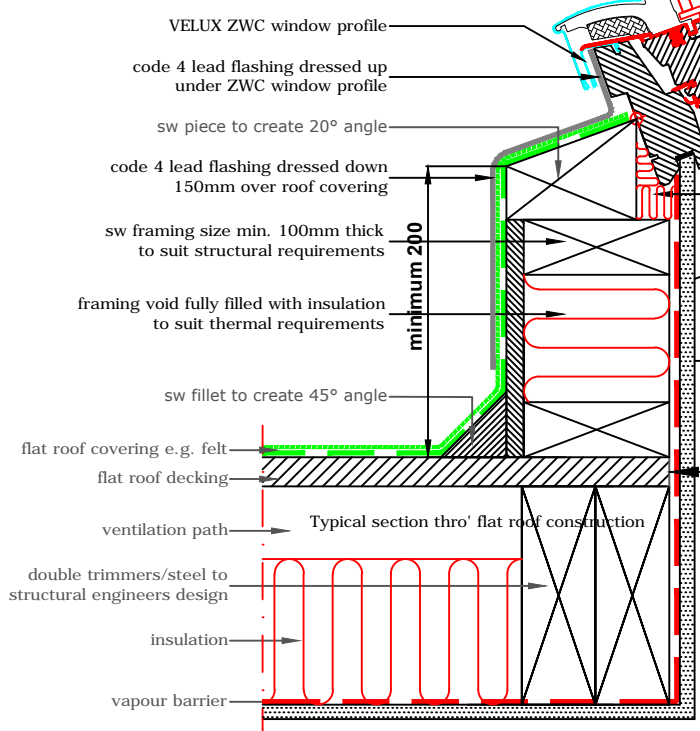
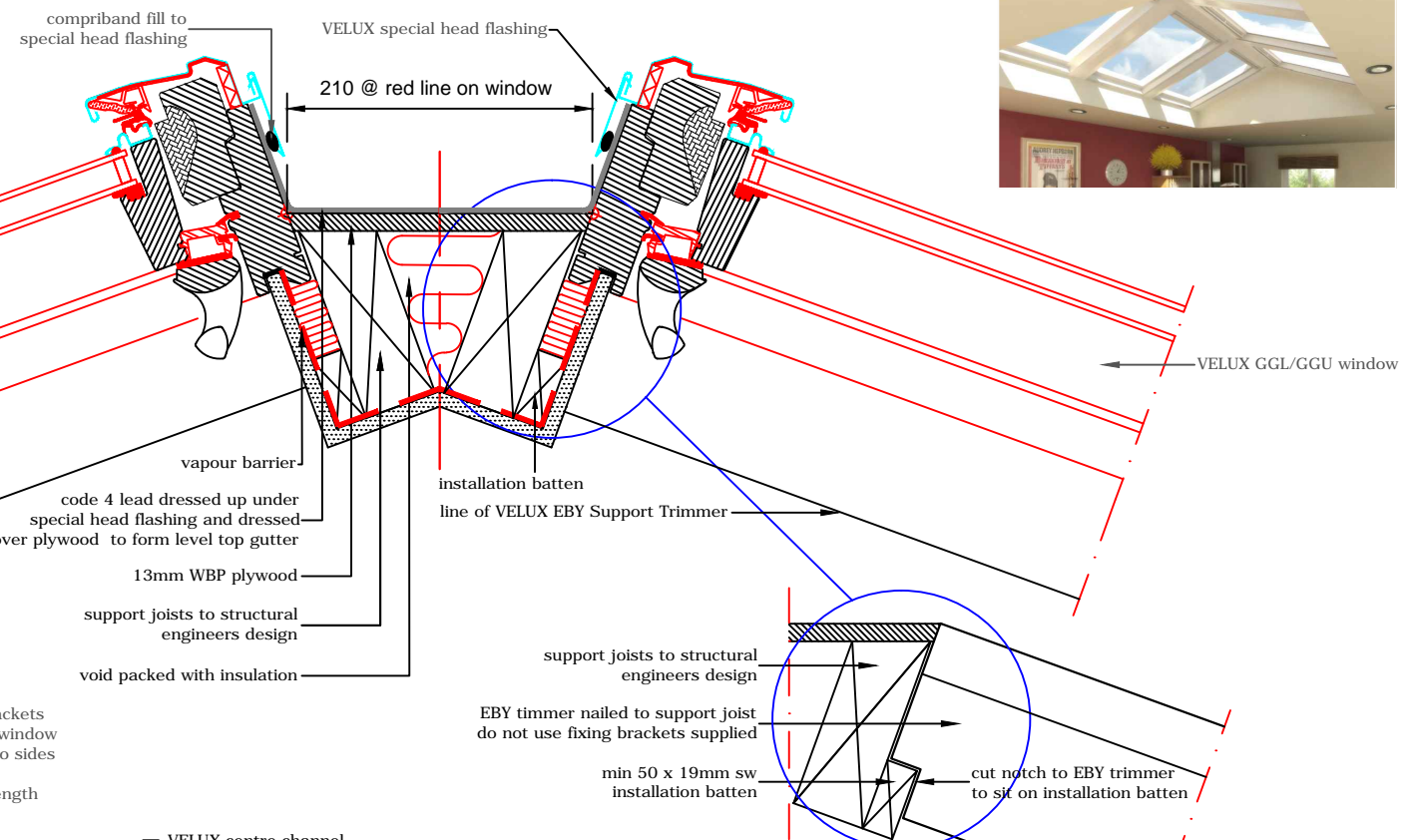


STRUCTURAL OPENING LENGTH DIMENSIONS @ 20°

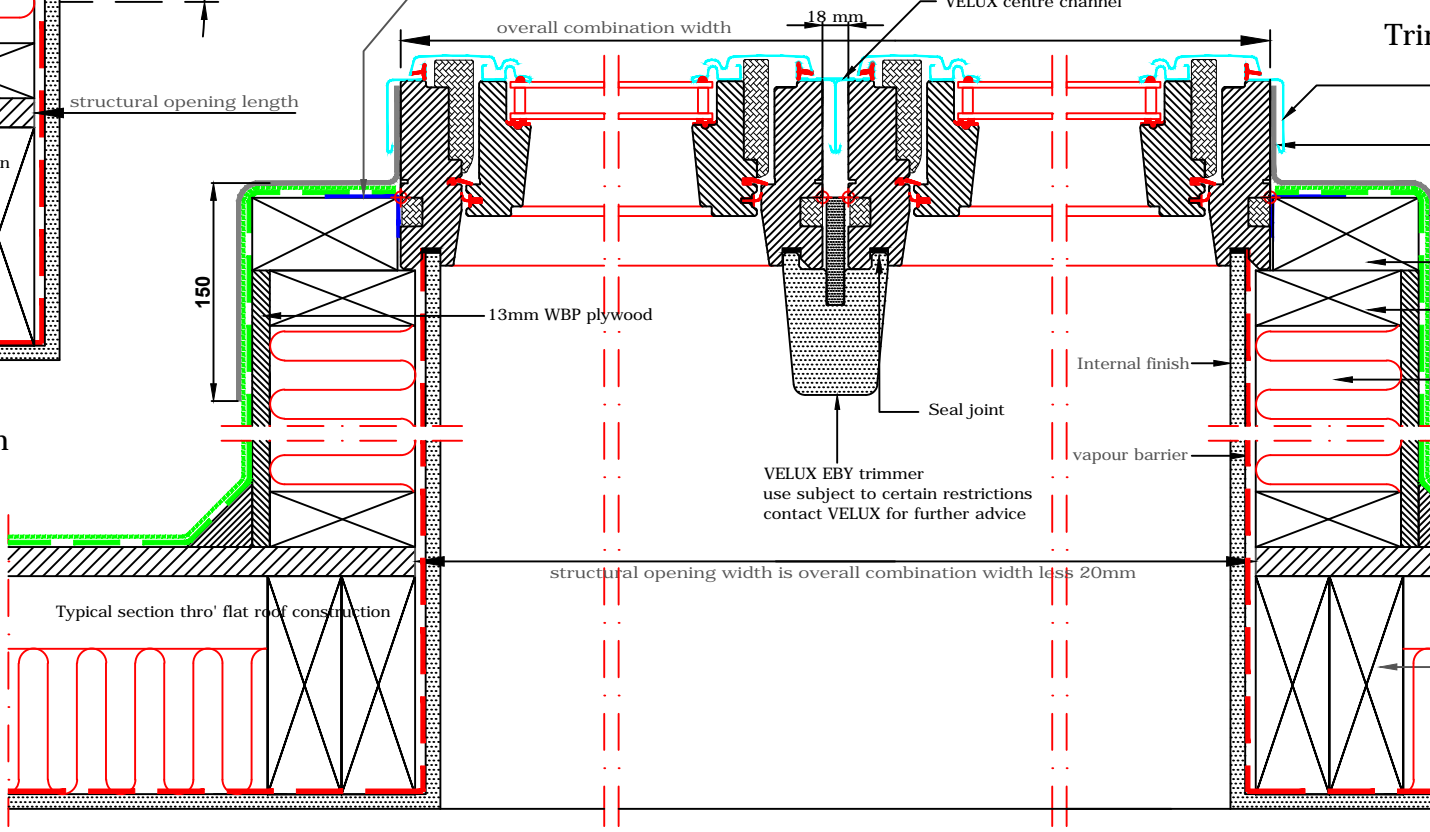
Window ref (e.g. MK04)	Window length (mm)	Opening size (mm)
-K02	780	1630
-K04	980	2005
-K06	1180	2385
-K08	1400	2795
-K10	1600	3170
-K12	1800	3550

see section B-B below for structural opening width

Typical roof plan

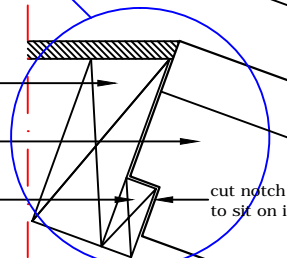


Section A-A
Typical section thro' pitch



Section B-B
Typical section thro' combination

Trimmer connection detail



VELUX components supplied:
 GGL/GGU windows - manual/electric
 ZWC window profile kits
 EBY trimmers
 special head flashings
 centre channels

NOTE!
 This drawing is for guidance only and both the designer and installer must satisfy themselves that the principles outlined in this drawing are effectively transposed to suit unique site conditions and limitations

NOTE:
 3mm L-shaped galvanised steel brackets by others to be fixed at red line to window on 50mm deep sw battens - fixed to sides of window at head and base and at centres of window where window length exceeds 1400mm

structural opening width is overall combination width less 20mm



VELUX Company Ltd
 Woodside Way
 Glenrothes, Fife KY7 4ND
 tel: +44 (0) 1592 778 225

VELUX centre-pivot roof window
GGL custom combi installation into atrium
 Custom built atrium framework - installed with 18mm frame gap
 All dimensions are in millimetres where shown

NOTE! When installing VELUX roof windows, flashings and accessories, please ensure compliance with building regulations and British/European standards where necessary. This detail represents the principles of a typical installation only and the design and specification of the final detail is the responsibility of others.

Latest revision:
 Note re: restrictions on use of EBY trimmer added

Date:	February 2014
Rev no:	B
Rev date:	Nov 2014
Drawn:	PJH

File name:
GGL-SHF-0214-1212

Scale: 1:5 approx. @ A3