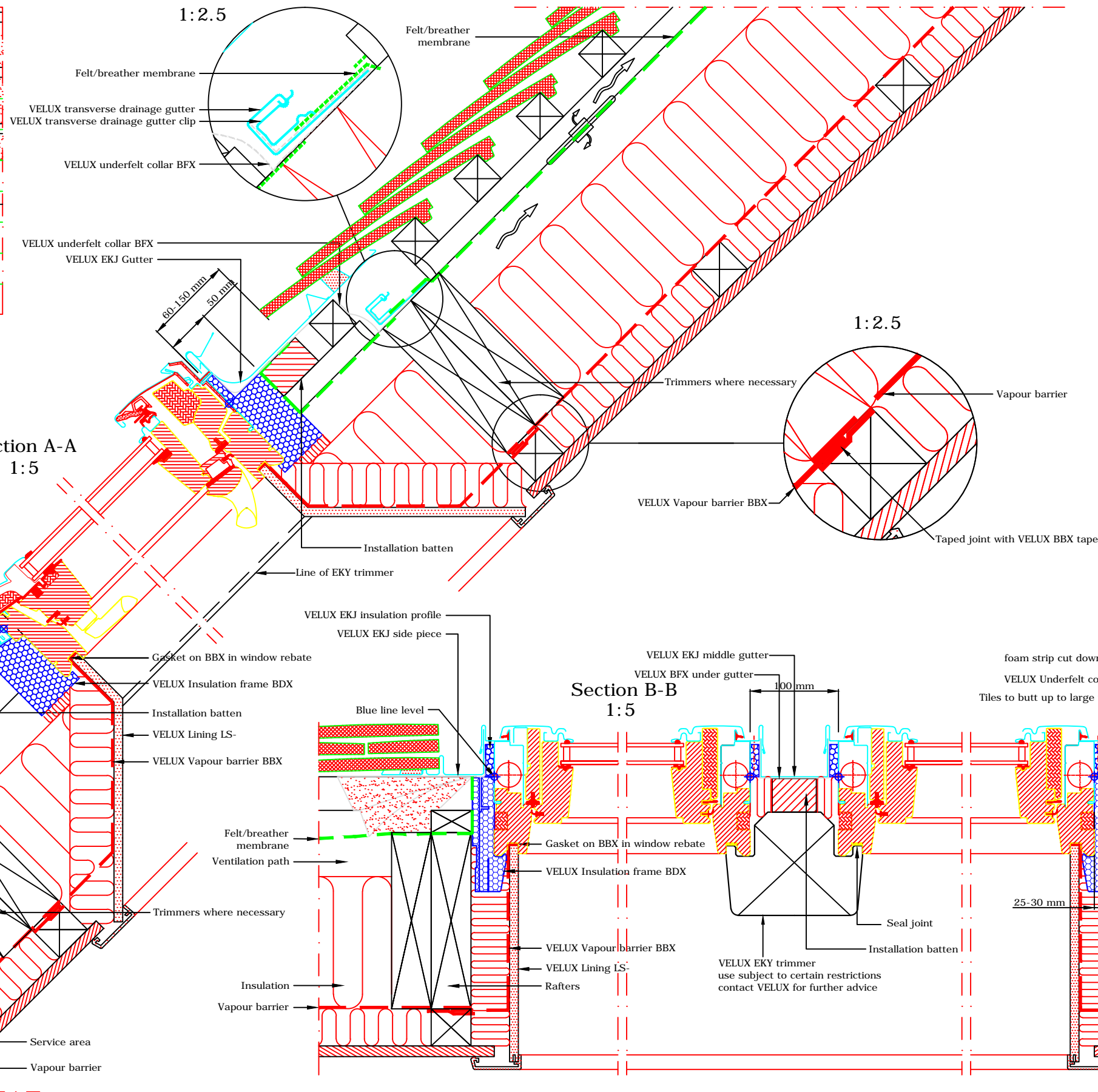










TYPICAL ELEVATION



- VELUX Products:
-  GPL
15°-55°*
* 55°-75° with special springs
 -  EKJ
20°-90°
 -  EKY
 -  BFX
 -  BDX
 -  BBX
 -  LS-
- Roof covering:
-  PLAIN TILES
< 15 mm

VELUX
 VELUX Company Ltd
 Woodside Way
 Glenrothes, Fife KY7 4ND
 tel: +44 (0) 1592 778 225

VELUX top-hung roof window
GPL coupled installation into plain tile
 EKJ flashing kit - recessed install - 100mm frame gap
All dimensions are in millimetres where shown

NOTE! When installing VELUX roof windows, flashings and accessories, please ensure compliance with building regulations and British/European standards where necessary. This detail represents the principles of a typical installation only and the design and specification of the final detail is the responsibility of others.

Latest revision:
 Note re: restrictions on use of EKY trimmer added

Date: **January 2014**
 Rev no: A
 Rev date: Nov 2014
 Drawn: **PJH**

File name:
GPL-EKJ-0114-1133
 Scale: **1:5 approx. @ A3**